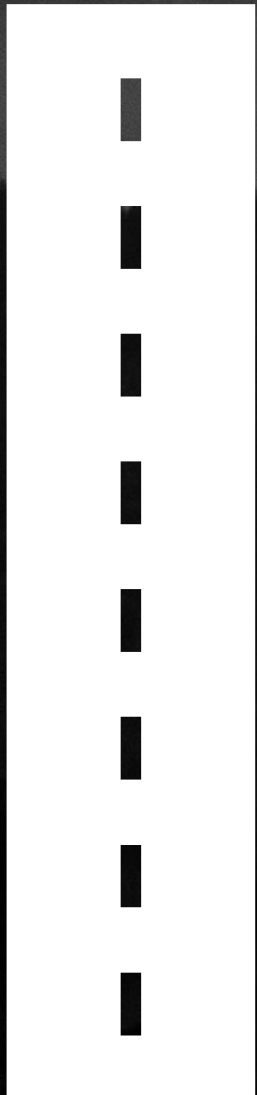


RONDO

EMBARGO
TBA

RATT



RATT **CONCEPT**

ROAD BIKE OF THE FUTURE

ALLROAD BIKES ARE THE ROAD BIKES MOST CYCLIST SHOULD BE RIDING. THEY LET YOU GO ANYWHERE FAST, IN COMFORT AND CONTROL.

THESE BIKES BRING NEW PEOPLE INTO CYCLING WHO ARE ENTICED BY THE IDEA OF CYCLING ON SMALL ROADS AWAY FROM THE TRAFFIC.

THESE BIKES COMBINE WHAT PEOPLE LOVE ABOUT THE ROAD BIKES - EFFORTLESS SPEED WITH ESSENCE OF MOUNTAIN BIKES - GO-ANYWHERE ABILITY.



RATT

CONCEPT

HIGH PERFORMANCE BIKE *DESIGNED FOR WIDE TYRES*

*YES, NARROW TIRES FEEL FAST.
THEY TRANSMIT EVERY ROAD
IRREGULARITIES WITH FREQUENCY
DEPENDENT ON THE SPEED.
WE ASSOCIATE THIS SENSATION WITH
SPEED.*

*BUT, WHAT IF YOU COULD GET THE
SAME SPEED BUT ACHIEVED IN
SMOOTH, COMFORTABLE RIDE?*

*NEW TYRE TESTS SHOW THAT A
MODERN FAT TYRE WILL ROLL AS FAST
A NARROW ONE, JUST WITHOUT THE
BONESHAKER EFFECT.*

RONDO





UNDER EMBARGO



RATT CONCEPT

UNDER EMBARGO

GO
**ANYWHERE
FAST**

A WELCOME SIDE EFFECT OF HAVING FAST, COMFORTABLE WIDE TIRES IS THE GREAT EXPANSION OF RIDING OPPORTUNITIES. YOU ARE NO LONGER LIMITED TO SMOOTH PAVEMENT. CARRY ON RIDING INTO BROKEN SIDE ROADS, GRAVEL PATH, FOREST TRACK.

COMFORTABLE RIDING POSITION, PLUSH TIRES AND FRAME DESIGNED WITH SHOCK ABSORPTION IN MIND WILL LET YOU STAY LONGER ON THE BIKE AND GO FURTHER.

RONDO

----- THE SOLUTION

RATT

SOLUTION

WE CHOSE **650B WHEELS**

FOR RATT BECAUSE THE SMALLER DIAMETER LETS US USE WIDE SUPPLE TYRES WHILE KEEPING THE OVERALL WHEEL DIAMETER LOW.

THIS LET US DESIGN A ROAD BIKE GEOMETRY WITHOUT ANY COMPROMISE NEEDED TO ACCOMMODATE LARGE DIAMETER TYRES



RATT SOLUTION

UNREAL TRACTION

WIDE SUPPLE TYRE CREATES A WIDE CONTACT PATCH ON THE GROUND WHICH RESIST TURNING FORCES MORE THAN NARROW HIGH PRESSURE TYRE.

THIS MAY BE PERCEIVED AS SLOW AND VAGUE STEERING BY SOME RIDERS. BUT THE WIDE CONTACT PATCH GIVES YOU UNREAL TRACTION SO THERE WAS NOWA Y WE WOULD GIVE IT UP.

RONDO

RATT

SOLUTION

WE INCREASED **THE FORK RAKE**

TO KEEP THE HANDLING AGILE AND FAST WE INCREASED THE FORK RAKE TO CREATE LOW TRAIL GEOMETRY - PERFECTLY SUITED FOR RIDING ALL ROADS.

LOW TRAIL AND WIDE TYRES ARE MADE FOR EACH OTHER, RAZOR SHARP STEERING WITH THE ABILITY FOR MINUTE ADJUSTMENT OF THE COURSE, EVEN MID TURN.

IF LOW TRAIL IS NOT FOR YOU THOUGH - JUST FLIP THE CHIP FOR MORE TYPICAL ROAD RACE GEOMETRY.

RONDO

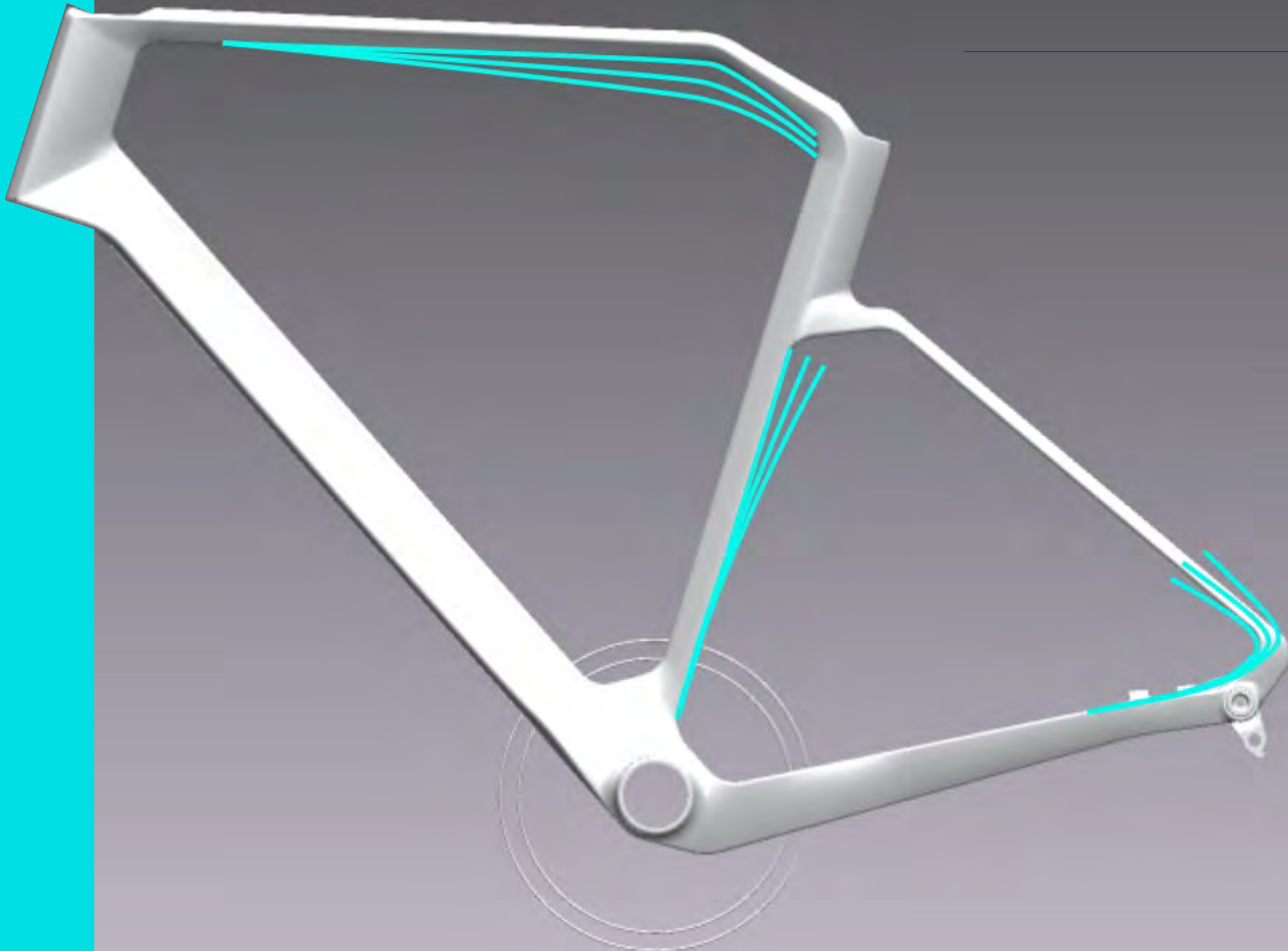


RATT SOLUTION

WE LEARNED A LOT HOW TO MAKE A

CARBON FRAME **COMFORTABLE**

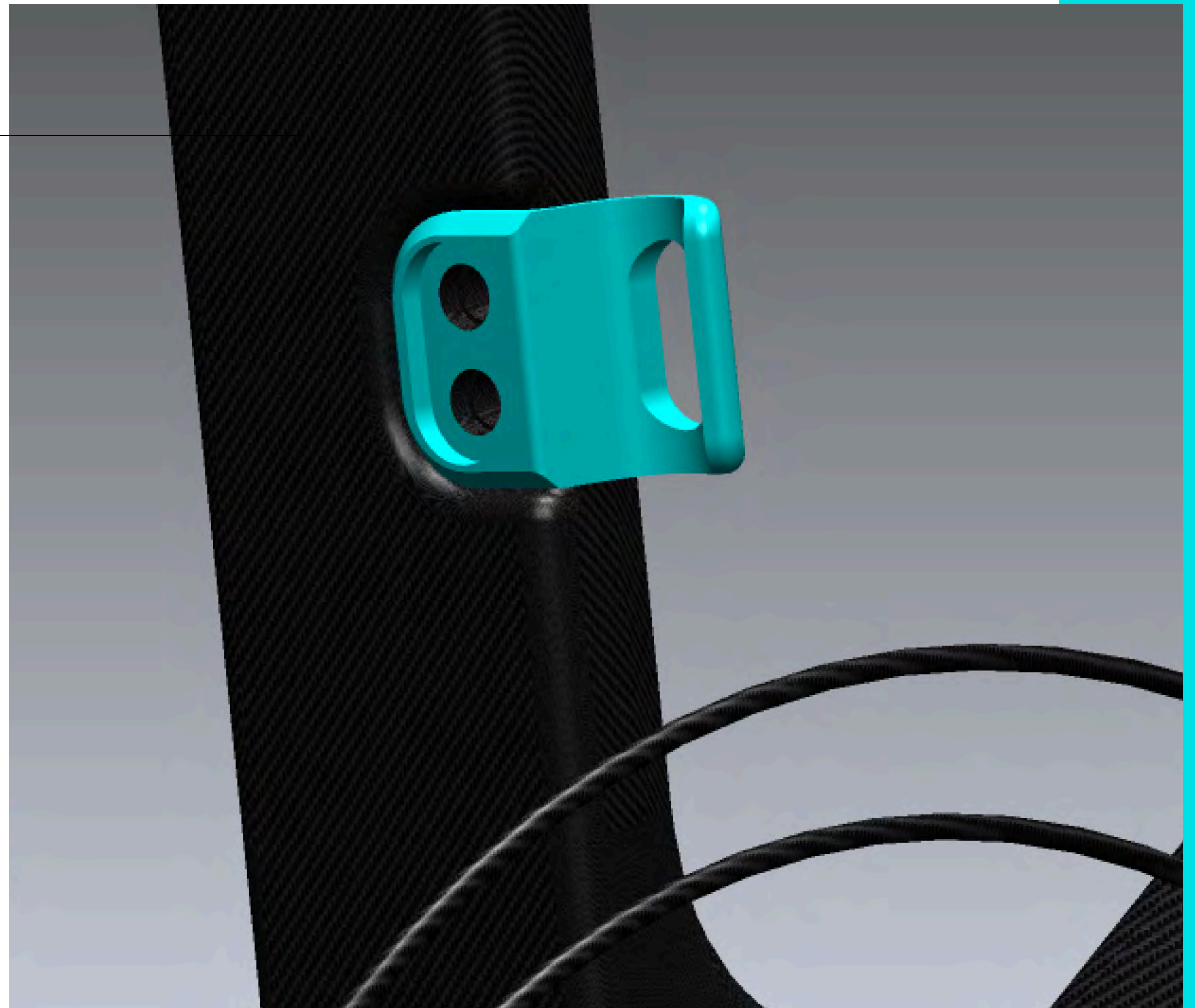
FOR RATT WE EMPLOYED EVERY TRICK WE KNEW TO DESIGN THE FRAME WITH PASSIVE SUSPENSION BUILT IN, TAKING THE FULL ADVANTAGE OF A CARBON CONSTRUCTION THAT ALLOWS US TO CAREFULLY TAILOR THE FIBERS LAYUP TO PROVIDE FLEX WHEN WE WANT IT AND STIFFNESS WHERE IT IS NEEDED.



GO FAST AND GO EVERYWHERE

*A FRONT DERAILLEUR HANGER? WHAT?
IS THAT NOT AN OLD SCHOOL
ANACHRONISM?*

*IN FACT, WITH THE RECENT
DEVELOPMENTS IN DRIVETRAINS,
PURPOSE BUILT FOR ALLROAD AND
GRAVEL BIKES, WE BELIVE THAT WELL
CHOSEN 2X DRIVETRAIN IS THE BEST
CHOICE FOR A BIKE THAT NEEDS TO DO
BOTH, GO FAST AND GO EVERYWHERE.*



	Size	Reach	Front center	Stack	Effective TT	Head Tube	Seat tube (C-T)	Chain stays	BB drop	Wheelbase	Head tube	ST angle	Fork length	Fork offset	Trail
LO	51	370	574,0	529,0	531,0	125,0	490,0	415,0	65,0	980,0	72.3	73,0	380,0	50,0	57,0
	54	381,0	593,0	552,0	550,0	150,0	520,0	415,0	65,0	999,0	72.3	73,0	380,0	50,0	57,0
	56	389,0	608,0	576,0	565,0	175,0	540,0	415,0	65,0	1014,0	72.3	73,0	380,0	50,0	57,0
	58	395,0	620,0	596,0	577,0	195,0	570,0	420,0	65,0	1031,0	72.3	73,0	380,0	50,0	57,0
HI	51	377,0	582,0	523,0	529,0	125,0	490,0	415,0	71,0	986,0	73.1	73.8	370,0	60,0	41,0
	54	388,0	600,0	547,0	547,0	150,0	520,0	415,0	71,0	1005,0	73.1	73.8	370,0	60,0	41,0
	56	397,0	616,0	571,0	563,0	175,0	540,0	415,0	71,0	1021,0	73.1	73.8	370,0	60,0	41,0
	58	403,0	627,0	590,0	574,0	195,0	570,0	420,0	71,0	1037,0	73.1	73.8	370,0	60,0	41,0

COMFORTABLE GEOMETRY - PERFECT FOR LONG DAYS IN THE SADDLE AND CAPABLE ON ANY SURFACE

AVAILABLE SPRING

2022



RATT **CF1**

- Frame: RONDO RATT FLY CARBON
- Fork: RONDO TWINTIP CARBON
- Handlebar: EASTON EC70 SL
- Saddle: SELLE SAN MARCO SHORTFIT
- Seatpost: RONDO CF
- Brakes: SHIMANO RX800
- Shifters: SHIMANO GRX RX800
- Crankset: SHIMANO GRX RX800 48/31
- Derailleur: SHIMANO GRX RX800/FD-RX400
- Cassette: SUNRACE CSRX1 EAU 11-32
- Wheels: RONDO X HUNT 650b
- Tires: VITTORIA TERRENO ZERO 650B-47

2022

AVAILABLE SPRING



RATT **CF2**

- Frame: RONDO RATT FLY CARBON
- Fork: RONDO TWINTIP CARBON
- Handlebar: RONDO FLARE
- Saddle: SELLE SAN MARCO SHORTFIT
- Seatpost: RONDO AL
- Brakes: SHIMANO GRX RX400
- Shifters: SHIMANO GRX RX400
- Crankset: SHIMANO GRX RX600-10 46/30
- Derailleur: SHIMANO GRX RX400/FD-RX400
- Cassette: SUNRACE 11-32 10speed
- Wheels: RONDO LIT WHEELSET
- Tires: VITTORIA TERRENO ZERO 650B-47

2023

RANGE EXPANSION



RATT

CFO

2023

RANGE EXPANSION



RATT

AL

2023

RANGE EXPANSION



RATT

ST

RONDO

MEDIA CONTACT:

Dani Odesser / Dani O. Kommunikation

P. +49 (0)170 3131812

hello@dani-o.com

www.dani-o.com

RATT - ROAD BIKE OF THE FUTURE